



Guide to viewing Spatial Development and Environmental Management Framework (SDF-EMF) maps in City of Cape Town Map Viewer and getting access to GIS layers

Date of this version: 14 Jul 2023

This guide is a supplement to the [City of Cape Town Viewer Quick Help Guide](#). It provides directions on how to locate and view the City of Cape Town Spatial Development and Environmental Management Frameworks (SDF-EMFs) maps in the [City of Cape Town Map Viewer](#).

Always consult the SDF-EMF maps together with the SDF-EMF documents available on the [City of Cape Town Planning Portal](#). An overview of the maps is provided in the [Spatial Development and Environmental Management Framework Map Guidebook](#).

The SDF maps are prepared at two scales: the Municipal SDFs (MSDF) are at the metro-scale and the District SDFs (DSDF) are at the district-scale. While there are particular maps with an EMF theme, the EMFs are fully integrated into the SDFs and there are features found on other maps that fulfil an EMF function. In this document, the term SDF will be used to refer to the MSDFs, DSDFs and EMFs collectively.

MSDF website: [Click Here](#)

DSDF website: [Click Here](#)

NOTE: For map legends, please refer to section 6 & 7 of this guide or download copies of the relevant map(s) to view alongside the interactive map viewer from the [2023 MSDF maps link](#) or from the relevant [2023 DSDF District Plan document section](#).

Full website paths to resources are provided in step 1 of this guide.

Contents

Table of Figures	2
1. Access important links.....	2
2. Open the City of Cape Town Map Viewer.....	3
3. Locate the SDF maps	4
4. View the SDF maps with aerial imagery	6
5. View the SDF maps with other Viewer theme layers	7
6. Map Legends: Digital Maps CTMSDF APPROVED 2023	8
2023 MAP 5A: Precautionary Risk Areas	8
2023 MAP 5B: Biodiversity Network and Marine Protected Areas	9
2023 MAP 5C: Areas of Agricultural Significance & Aquifer Resource Protection Zones ..	10
2023 MAP 5D: Consolidated Spatial Plan Concept	11
2023 MAP 5E: Climate Change Risk	12

2023 MAP 5F: Heritage Conservation Areas and Cultural Landscapes	13
2023 MAP 5G: Tourism Assets & Green Infrastructure Network	14
7. Map Legends: Digital Maps CCT District Plan 2023.....	15
2023 District Plan DSDF and EMF	15
2023 Sub District Plan DSDF	16
8. Access to individual GIS layers	17

Table of Figures

Figure 1: CityMap Viewer website	3
Figure 2: Layer List tool button	4
Figure 3: Imagery tab in Layer List window	4
Figure 4: Aerial imagery transparency setting	6
Figure 5: Displaying theme layers.....	7
Figure 6: Zoom in to display theme labels	7

1. Access important links

City of Cape Town Map Viewer (public) :

<https://citymaps.capetown.gov.za/EGISViewer/>

City of Cape Town Map Viewer Help Guide:

https://esap.capetown.gov.za/EGISViewer/Widgets/CCT_ExtAbout/documents/help.pdf

Spatial Development Framework Map Guidebook :

https://resource.capetown.gov.za/documentcentre/Documents/Procedures%2c%20guidelines%20and%20regulations/MSDF_DSDF_MapGuidebook.pdf

Downloadable MSDF Maps (with EMFs integrated):

https://resource.capetown.gov.za/cityassets/Media%20Centre%20Assets/MSDF_High_Res_Maps.zip

Downloadable DSDF Maps (with EMFs integrated) – refer to relevant district section:

<https://www.capetown.gov.za/Work%20and%20business/Planning-portal/Spatial-Plans-and-Frameworks/District-plans#Heading0>

City of Cape Town Planning Portal:

<https://www.capetown.gov.za/Work%20and%20business/Planning-portal/Spatial-Plans-and-Frameworks>

City of Cape Town Open Data Portal:

<https://odp-cctegis.opendata.arcgis.com/>

2. Open the City of Cape Town Map Viewer

Open the City of Cape Town Map Viewer in your Internet Browser (works in Microsoft Edge, Google Chrome, Mozilla Firefox, Brave) by clicking on [this link](https://citymaps.capetown.gov.za/EGISViewer/) or by typing in this website address: **<https://citymaps.capetown.gov.za/EGISViewer/>**

The following screen should appear:

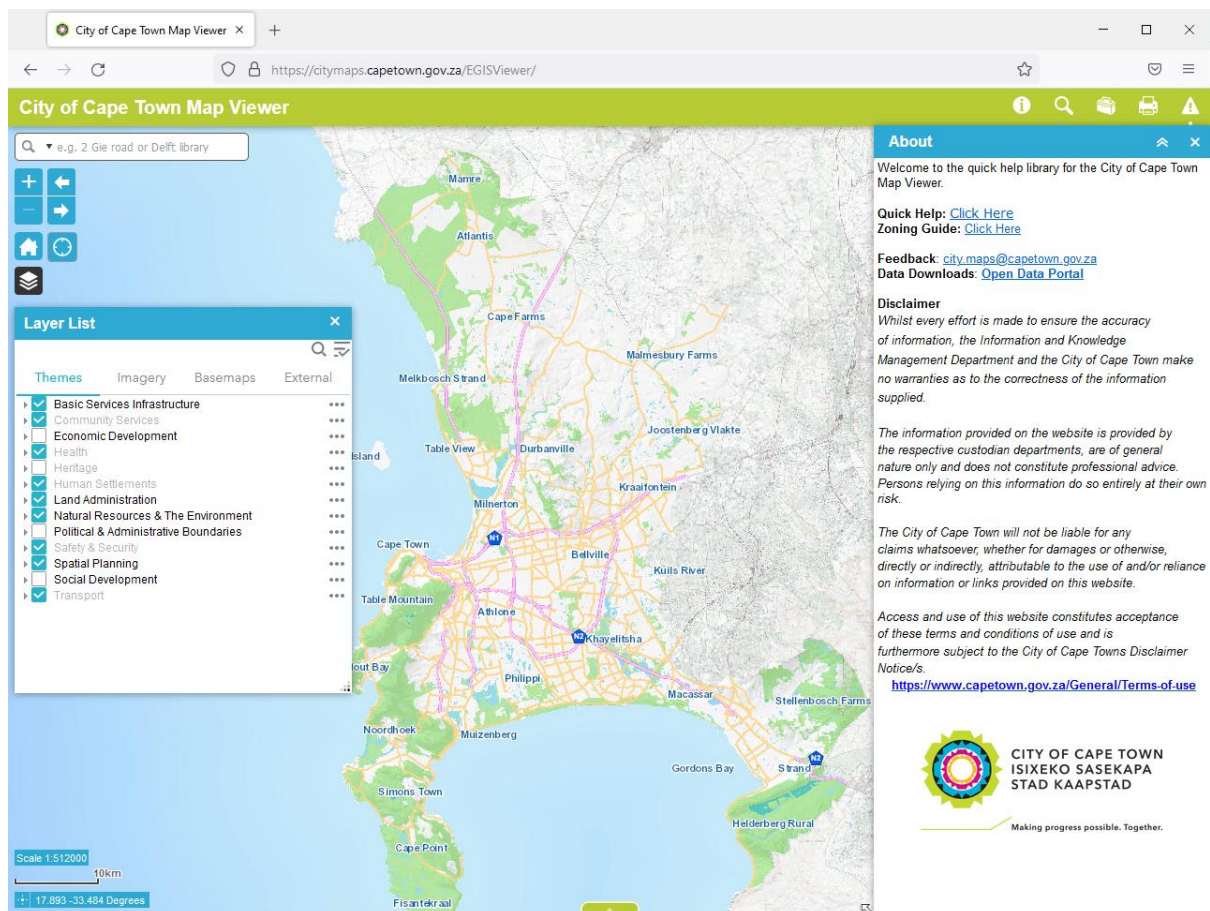


Figure 1: CityMap Viewer website

3. Locate the SDF maps

In the City of Cape Town Map Viewer, go to the Layer List window, which can be opened by clicking on the Layer List tool.

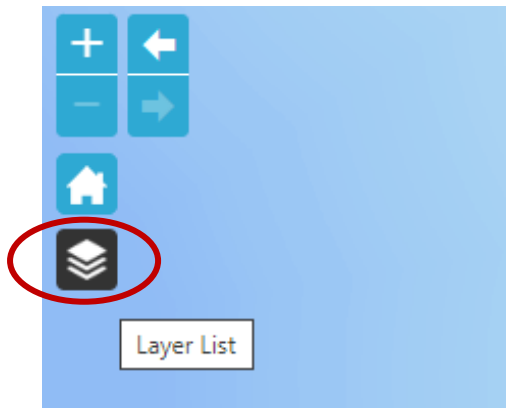


Figure 2: Layer List tool button

Go to the Imagery tab in the Layer List window.

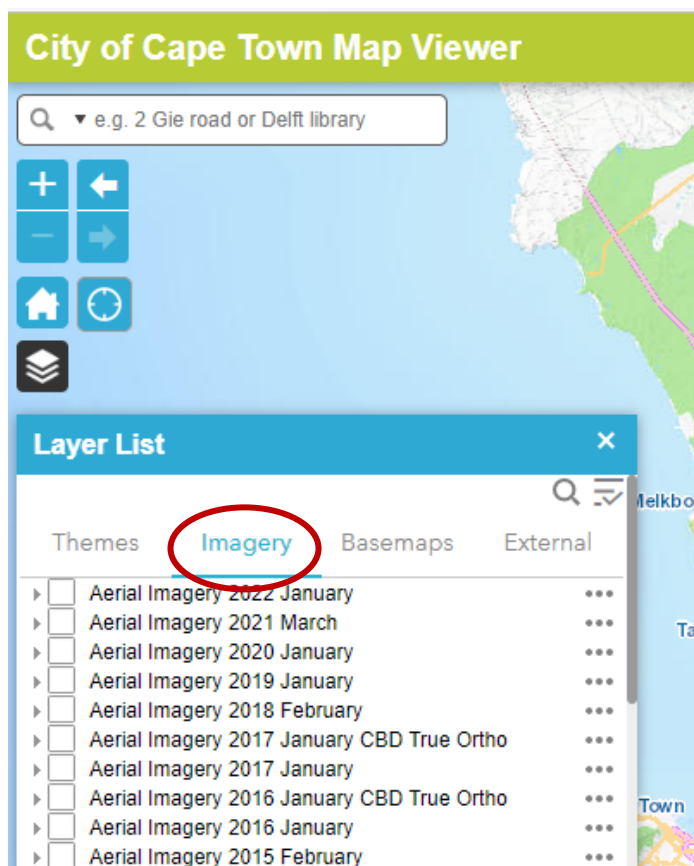


Figure 3: Imagery tab in Layer List window

Scroll down through the available imagery to locate the SDF maps named **Digital Maps** etc. and tick the tick box before the map name to display the selected map. The layers with names starting with **Digital Maps CTMSDF** are the key MSDF maps and the layers below starting with **Digital Maps CCT...District Plan** are City-scale composites of the key DSDF maps, with EMFs integrated into both sets at the 2 different scales.

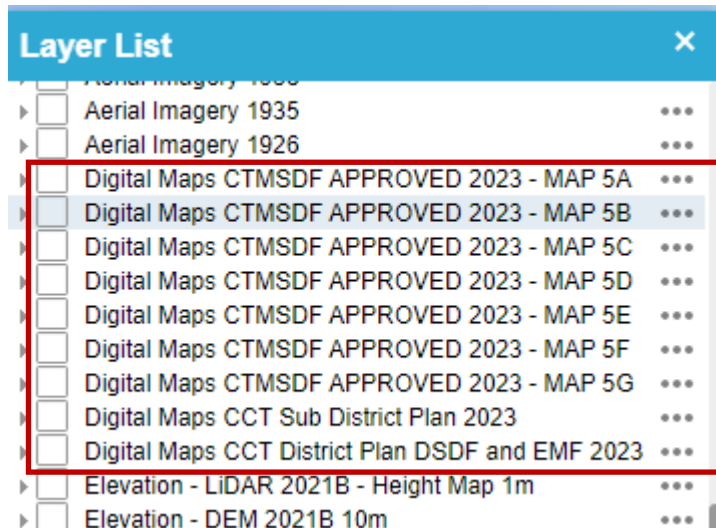


Figure 3: SDF maps beneath Aerial Imagery

Please see page 8 onwards for the map names and legends.

4. View the SDF maps with aerial imagery

Scroll up in the Imagery tab of the Layers List window to locate the aerial imagery. To view the SDF map with aerial imagery, tick the aerial imagery layer on and make it semi-transparent by clicking on the ellipses to the right of the aerial imagery layer name, clicking Transparency and then moving the slider.

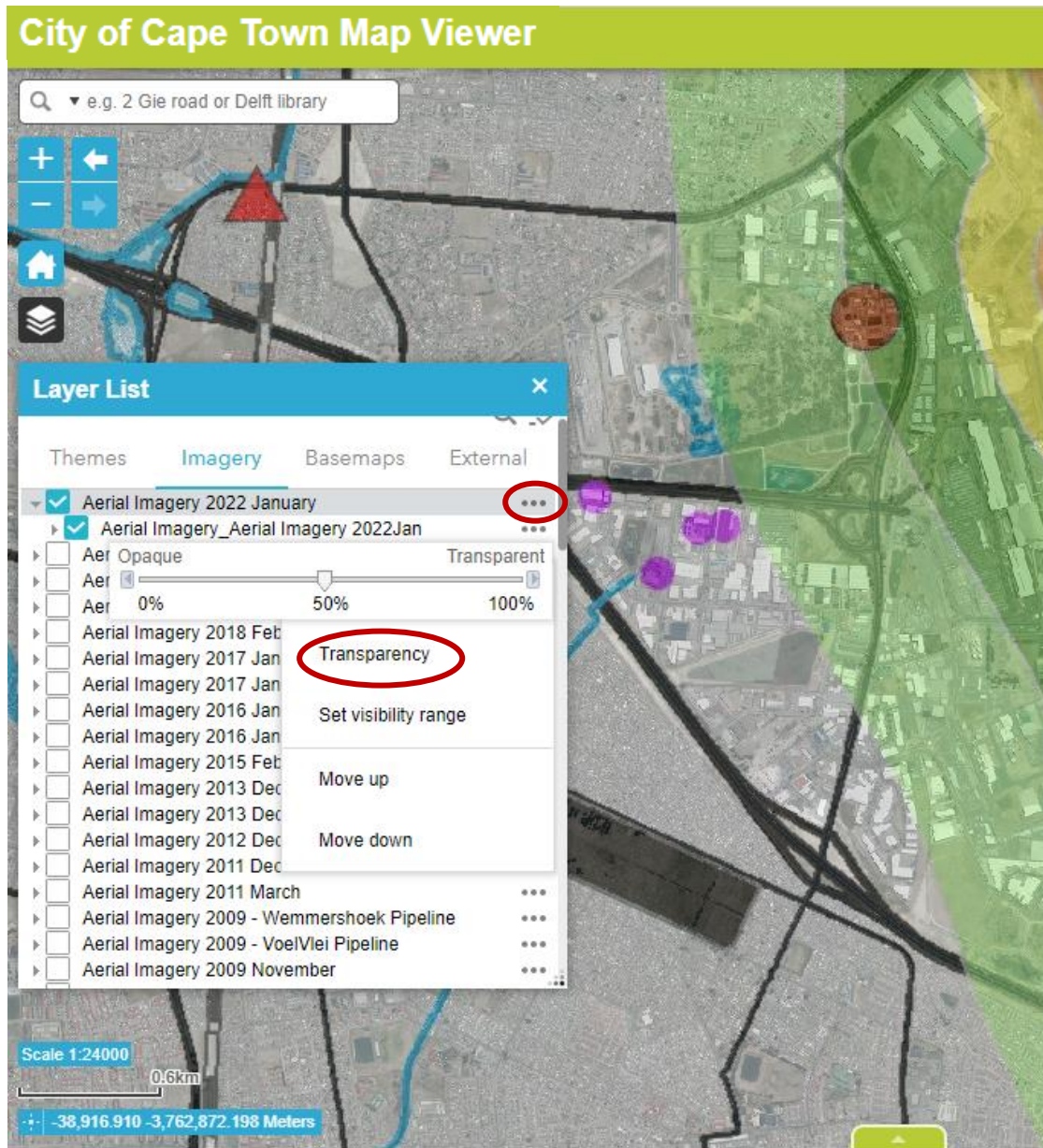


Figure 4: Aerial imagery transparency setting

5. View the SDF maps with other Viewer theme layers

This is very useful for overlaying more up-to-date information over the SDF map if it is available as an individual layer in the City of Cape Town Map Viewer. In the Layer List window, go to the Themes tab and tick on the groups and layers, expanding the small arrow to the left where necessary.

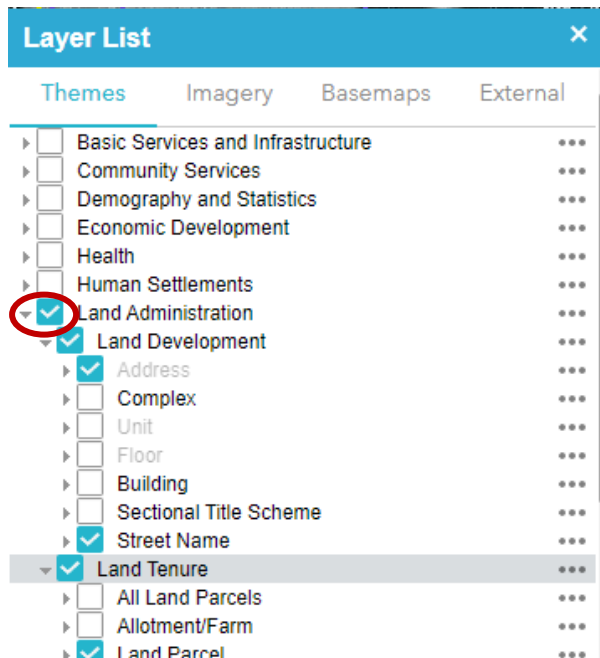


Figure 5: Displaying theme layers

If the layer name appears greyed out, it is necessary to zoom in to a smaller scale until the layer and its labels display.

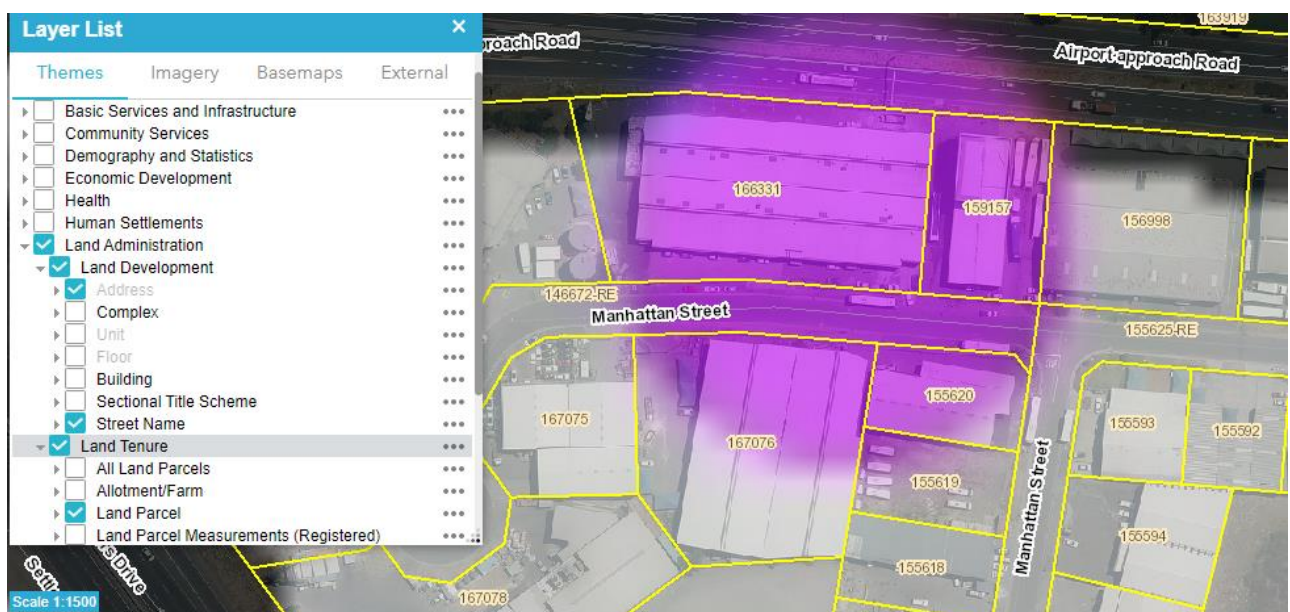
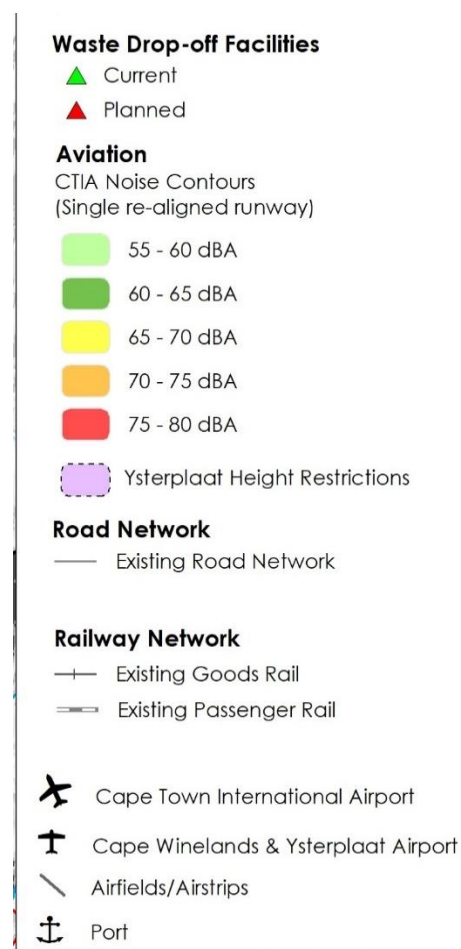
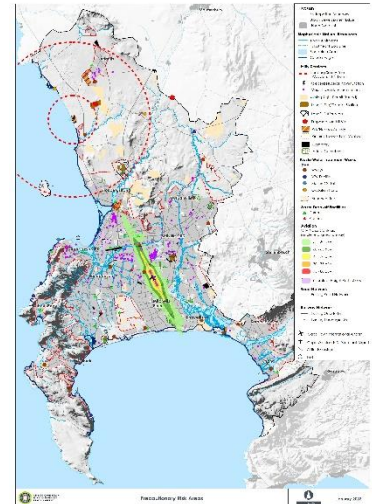


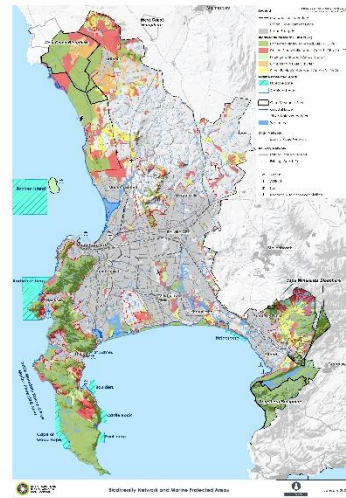
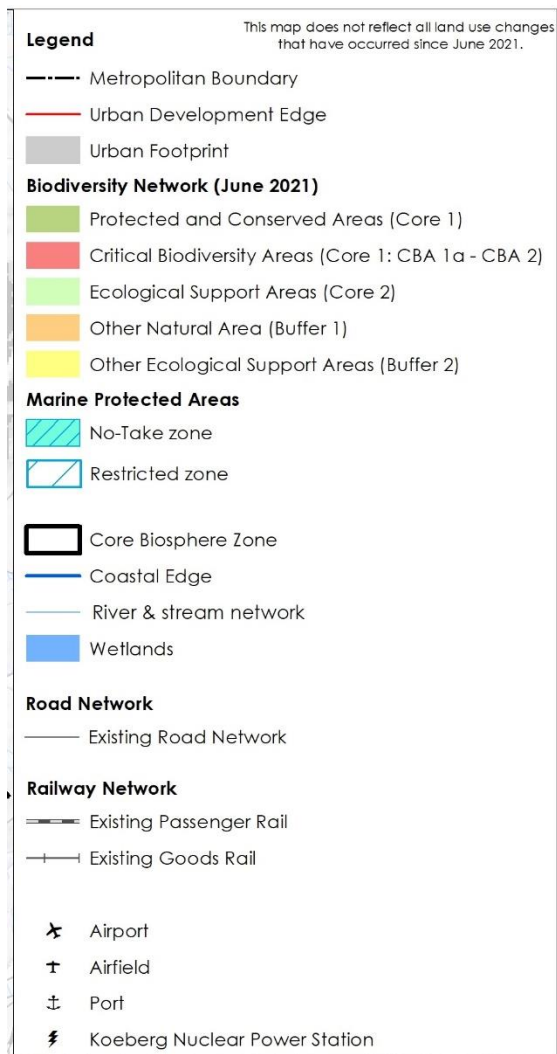
Figure 6: Zoom in to display theme labels

6. Map Legends: Digital Maps CTMSDF APPROVED 2023

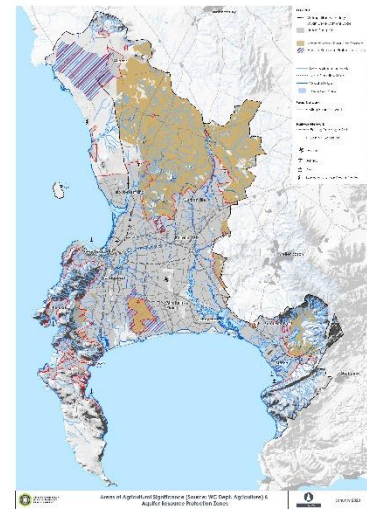
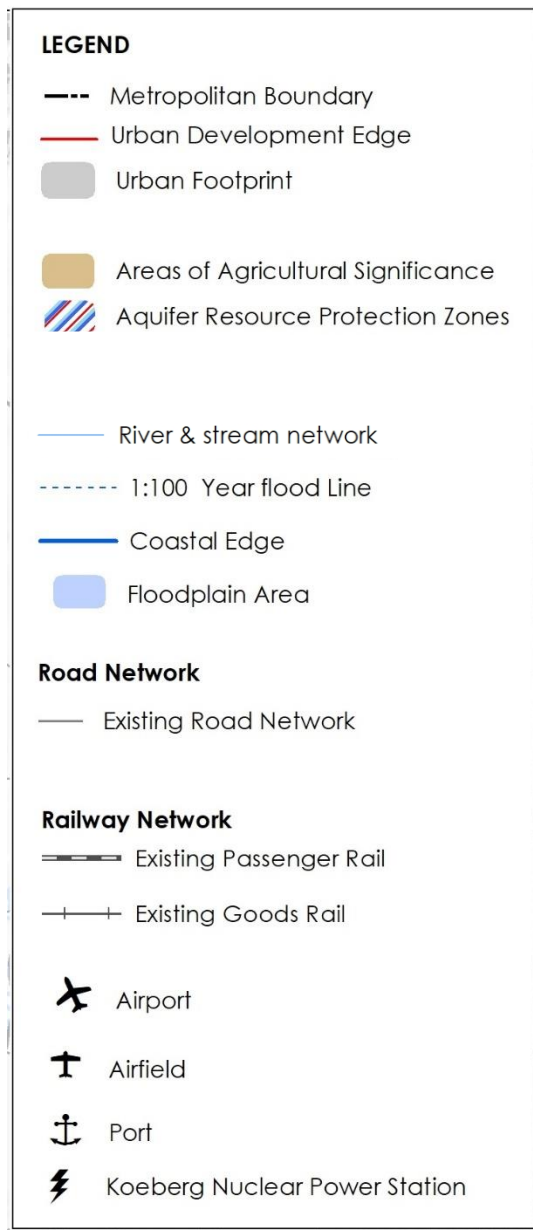
2023 MAP 5A: Precautionary Risk Areas



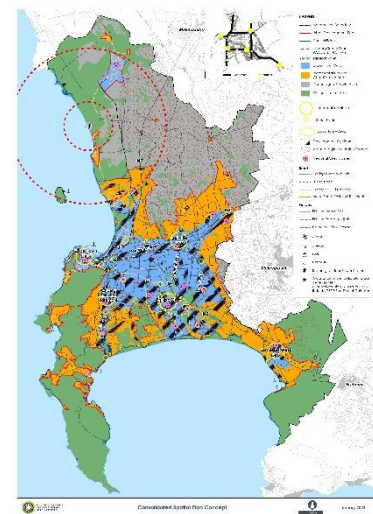
2023 MAP 5B: Biodiversity Network and Marine Protected Areas



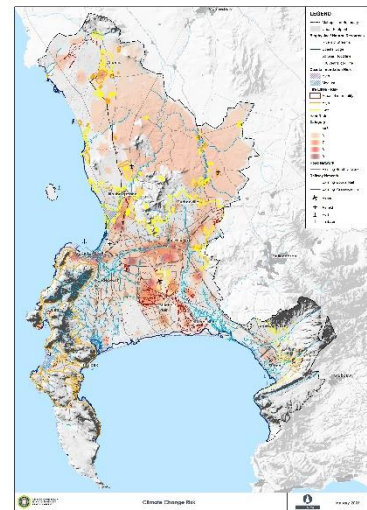
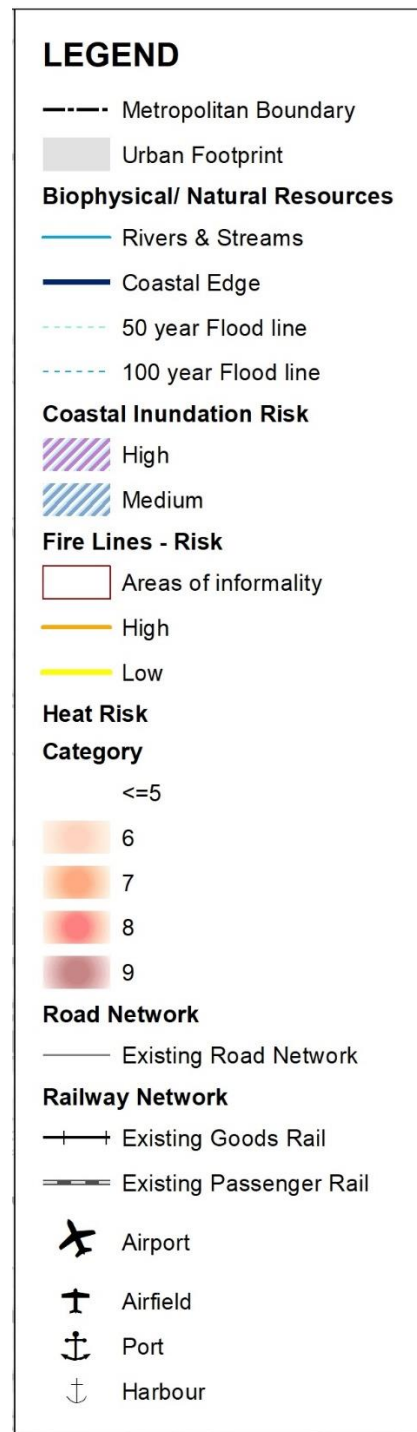
2023 MAP 5C: Areas of Agricultural Significance & Aquifer Resource Protection Zones



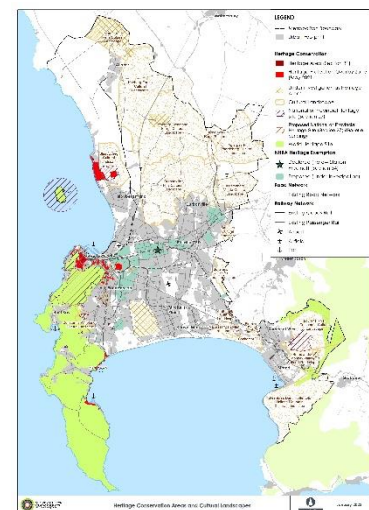
2023 MAP 5D: Consolidated Spatial Plan Concept



2023 MAP 5E: Climate Change Risk



2023 MAP 5F: Heritage Conservation Areas and Cultural Landscapes



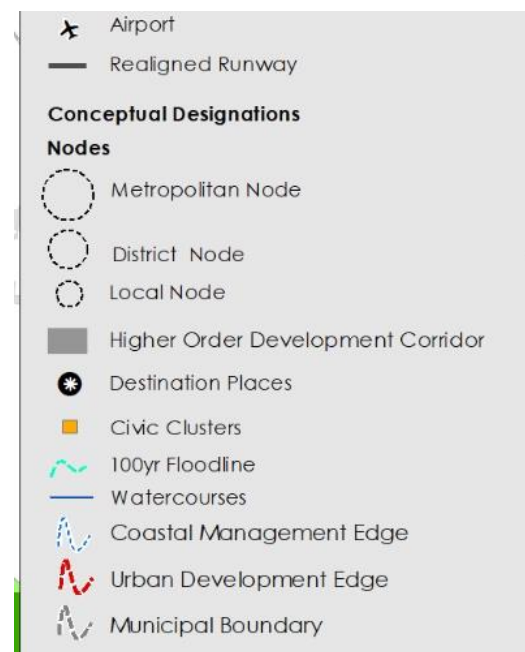
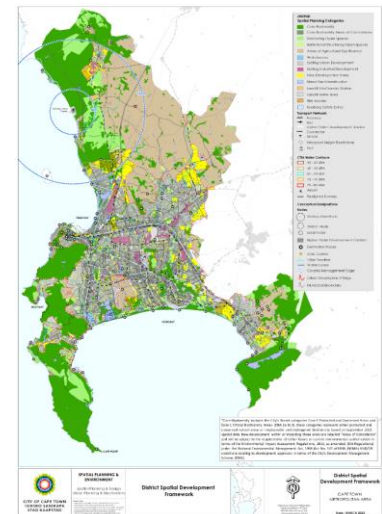
2023 MAP 5G: Tourism Assets & Green Infrastructure Network



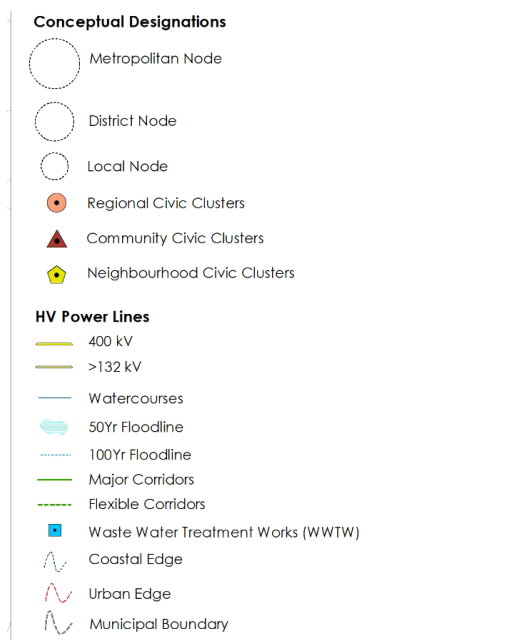
[LINK to information on Green Infrastructure Network](#)

7. Map Legends: Digital Maps CCT District Plan 2023

2023 District Plan DSDF and EMF



2023 Sub District Plan DSDf



[LINK to information on Green Infrastructure Network](#)

8. Access to individual GIS layers

The spatial information shown on the SDF maps in the Viewer was the best available when the documents were approved in January 2023 and the planning decision-making was based on these compilations at these scales at this point in time. However, when greater access to detail or for more up-to-date versions of the information is required, steps can be taken to locate individual layers where they are publicly available.

1. For the following listed SDF GIS layers and any others related to the natural or cultural environment, contact:

Environmental Management Department (enviro.gis@capetown.gov.za)

- Biodiversity Network & wetlands*
- [Green Infrastructure Network & corridors](#)*

* out-of-date on City of Cape Town Map Viewer & Open Data Portal.

2. For the following key SDF GIS layers (**only**), contact:

Urban Planning & Design Department (misp.data@capetown.gov.za)

- Areas of Agricultural Significance
- Development Corridors
- Development Focus Areas
- Environmental Focus Areas
- Mixed Use intensification areas
- New Development Areas
- Nodes
- Spatial Transformation Areas
- Urban Development Edge
- Urban Support Focus Areas

Note: the above UPD layers will be supplied via the City of Cape Town Open Data Portal in the near future.

3. For all other City of Cape Town GIS layers:

Search in the City of Cape Town Map Viewer Layer List

- See the [City of Cape Town Viewer Quick Help Guide](#) and section 5 of this guide to overlay the individual Viewer layer over the Viewer SDF map.

Search on the City of Cape Town Open Data Portal

- <https://odp-cctegis.opendata.arcgis.com/>

Contact City Maps Kiosk (City.Maps@capetown.gov.za)